

DATASHEET

Wi-Fi HaLow Starter Kit

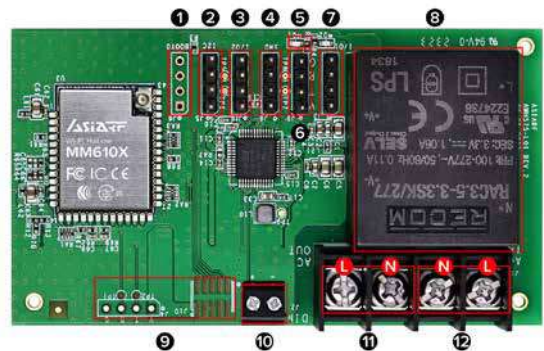
DP-575



Description

DP-575 Client is designed to fulfill field long distance 20 Mbps data requirements by Wi-Fi HaLow technology.

- Wi-Fi HaLow wireless combined in one IoT
- Wi-Fi HaLow Morse Micro MM6108
- Powered by AC85~277V ,50/60Hz
- Security: 64/128-bits WEP, TKIP, WPA, WPA2, AES, WPS
- Client Mode
- IEEE802.11ah
- STM32U5x5CI chipset @ 160Mhz
- Core : Arm® 32-bit Cortex®-M33 CPU with TrustZone®, MPU, DSP, and FPU



1 BOOT	5 Power LED	9 Debug
2 I ² C	6 UART Controller	10 PWM
3 GPIO	7 SPI	11 AC OUT
4 SWD	8 Converter	12 AC input

Switch and Dimming by PWM

Features

- **Simple Connection via I²C:** Ensures effortless sensor expansion for seamless integration.
- **Efficient Communication:** The UART system streamlines data exchange, promoting efficient communication.
- **Effortless Device Integration:** Our design allows easy adjustment and simple device connection, with GPIOs versatile for various applications.
- **Maximizing Battery Life:** Under general application conditions, the battery can last for at least five years or more, providing convenience and reducing maintenance costs in remote or hard-to-reach areas.
- **Maximize Reach with HaLow:** Use Wi-Fi HaLow's long-range, high-capacity transmission for easy, far-reaching image and video sharing.
- **Smart Energy Saving:** The adaptive PWM function offers precise control, energy efficiency, and programmability.
- **Effortless Control:** Facilitates switching and dimming via PWM. The dimming/switch functions enhance a user-friendly and flexible control experience.

For more detailed information, please contact our sales team: sales@asiarf.com / +886 2 2940 7880

