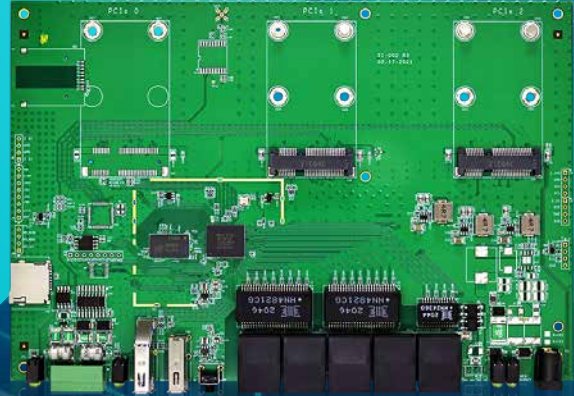


DATASHEET

Wi-Fi Router Board

DP7621-002

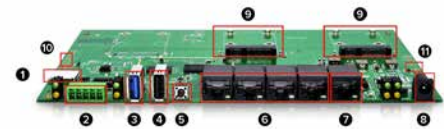
With 5 Giga Ethernet and 2 Mini PCIe



Description

DP7621-002 is a 206x140 mm Router board with MT7621A integrates a dual-core MIPS1004Kc (880MHz), HNAT/ HQoS/ Samba/ VPN accelerators, GbE switch, RGMII, USB3.0, USB2.0, 2xMini PCIe, SD-XC. The powerful CPU with rich portfolio is suitable for 802.11ac, LTE cat4/5, edge, hotspot, VPN, AC (Access Control). It can also connect to touch-panel, ZigBee/Z-Wave for Internet Service Router and Home Security Gateway. By this Wi-Fi Router board with RS232 and RS485, you can implement super IoT solution to reach smart automation and AI cloud control.

For the next generation router, MT7621A provides several dedicated hardware engines to accelerate the NAT, QoS, Samba and VPN traffic. These accelerators relieve the CPU for other upper layer applications.



1 Micro SD-XC	4 USB 2.0	7 WAN
2 RS-485+RS-232	5 RESET BUTTON	8 DC Power JACK
3 USB 3.0	6 LAN	9 PCIe SLOTS
10 JTAG	11 UART	

Features

- Mediatek MT7621A chipset
- Flash SPI NOR16MB, DDR3 512MB 16bits BUS
- 32 KB I-Cache and 32 KB D-Cache per core
- 256 KB L2 Cache (shared by Dual-Core)
- SMP capable
- Single processor operation configurable Gigabit Switch
- IPv4 routing, NAT, NAPT
- IPv6 routing, DS-Lite, 6RD, 6to4, HW QoS
- HNAT/ HQoS/ Samba/ VPN accelerators
- Support boot from Flash
- Mini PCIe, Micro SD-XC, USB, GPIOs, I2C, UART and GPIOs
- 5 Giga Ethernet ports with Power over Ethernet (PoE) MDI transceivers
- 16 hardware queues to guarantee the min/max bandwidth of each flow
- Seamlessly co-work with HW NAT engine
- 2Gbps wired speed HW Crypto Engine
- Deliver 400~500 Mbps IPSec throughput Green
- Intelligent Clock Scaling (exclusive)
- SDK support OPENWRT
- Suitable with IEEE802.11ac MT7612E, MT7615, LTE, 3G mini PCIe cards Powerful Wi-Fi and IoT Gateway like LoRa, Sigfox

For more detailed information, please contact our sales team: sales@asiarf.com / +886 2 2940 7880

