

DATASHEET

HaLow LoRa Omni Antenna
ANTOM91504004001



Electrical Data

Frequency	900~930 MHz
Gain	5dBi
VSWR	≤2.0
Polarization	Vertical
Impedance	50Ω
Connector Type	1 Port, N-Type Female
Temperature	-55° to +60° C (-67° to +140° F)
Color	White
Weight	400g
Material	Fiberglass
Max power	50w

Organizational Chart

Production Process Flowchart

```

graph TD
    A([issue materials]) --> B[automatic lathe machining]
    B --> C{FQC Inspection}
    C -- NG --> B
    C -- OK --> D[Outsourced Electroplating]
    D --> E{IQC Inspection}
    E -- NG --> D
    E -- OK --> F([In-warehouse Assembly])
            
```

Electrical Properties	
Frequency Range	900-930 MHz
Impedance	50 Ω
V.S.W.R.	900-930 MHz ≤ 2.0
Gain	5dBi
Radiation	Omni

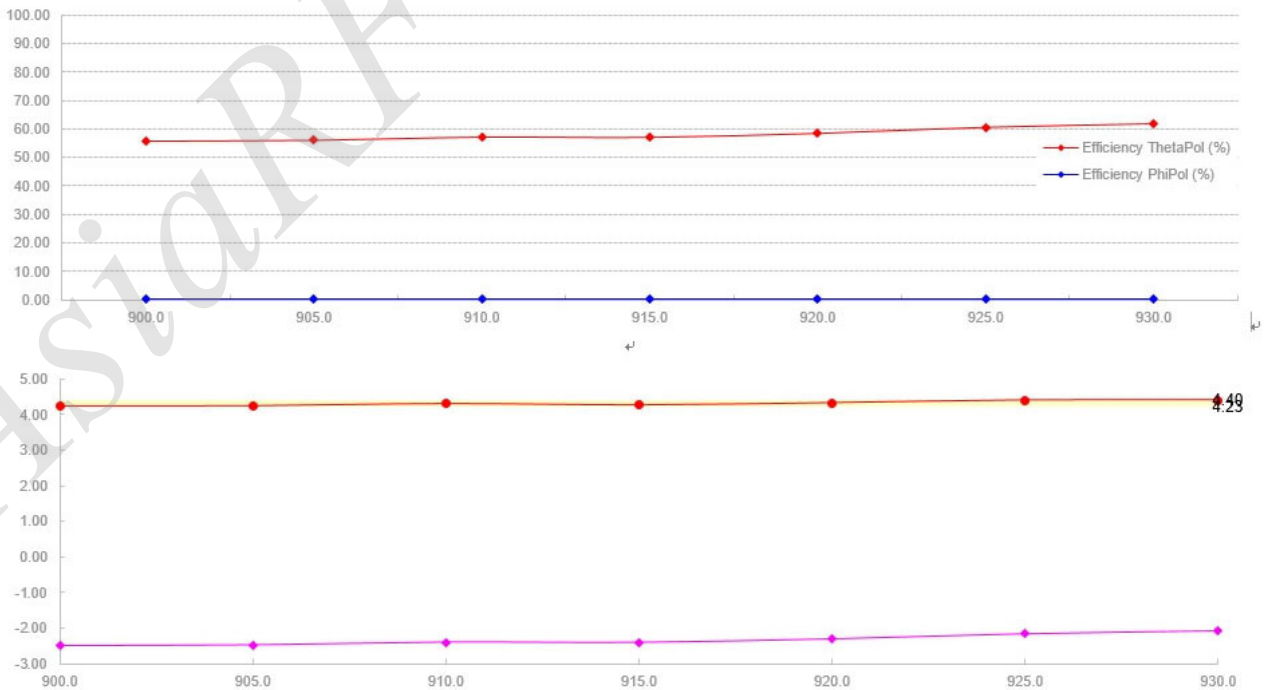
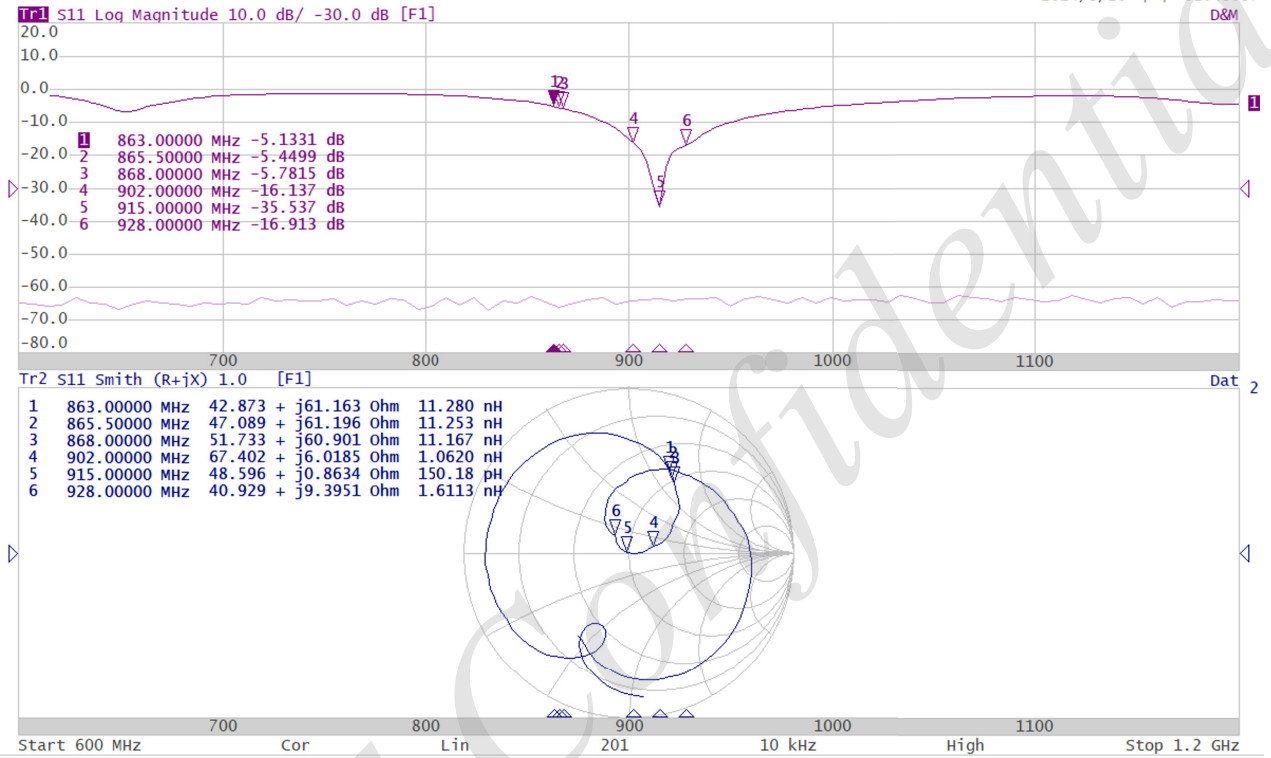
Inspection Standards and Focus

1. Mark * as critical dimensions
2. Smooth appearance, consistent electroplating color
3. Material complies with EU environmental standards

Tolerance Unspecified tolerances: .XX ±0.5 .X ±0.2 .X ±0.1 .XX ±0.05 .XXX ±0.03 Unspecified angular tolerance: 1°	CU NO Material Finish Scalp REV Unit: mm	Part Name C/U Part No. Part No. APP Check Draw	AsiaRF Co., Ltd. ANTOM91504004001 APP Check Draw Heyanju 2023/06/27
--	---	---	---

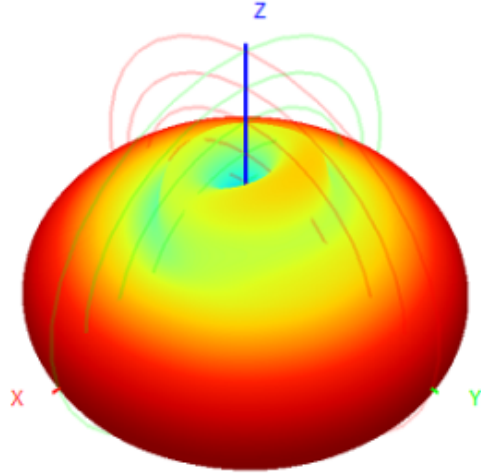
Gain Test Report

2024/3/20 下午 02:49:57

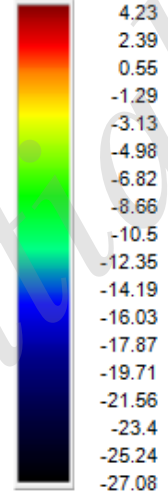
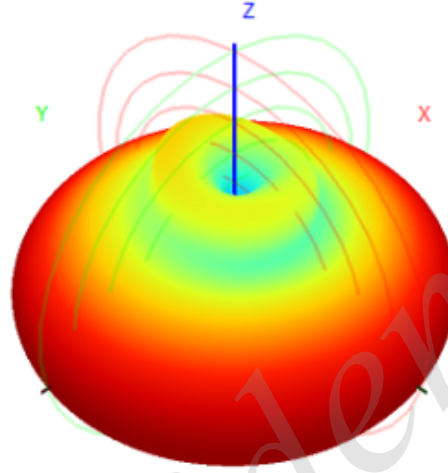




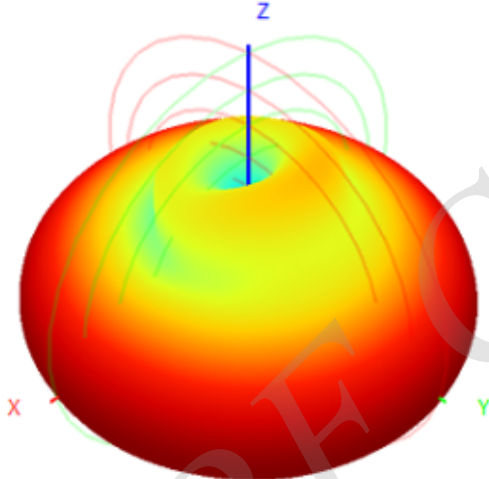
900.0MHz H+V, Eff: 56.2%



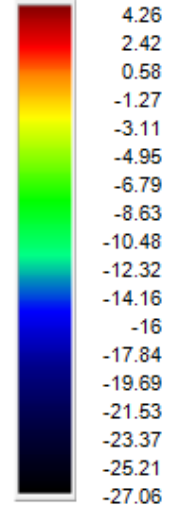
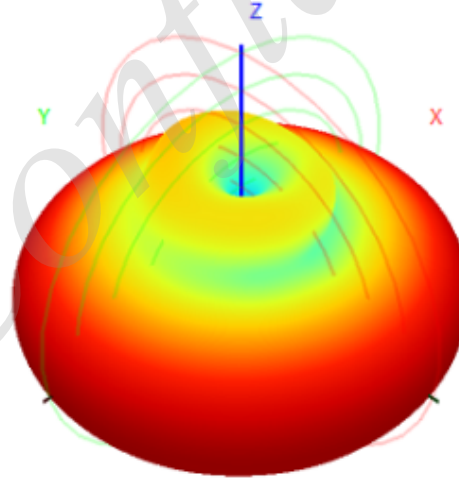
Back View



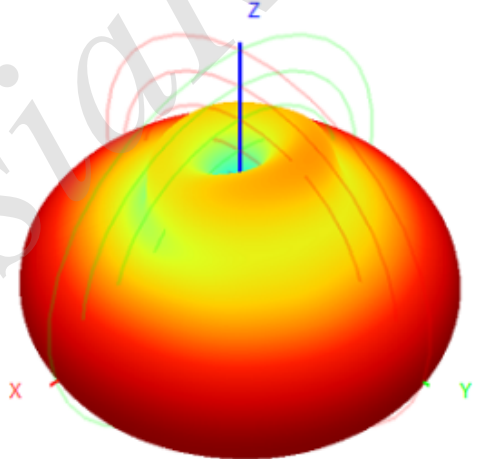
915.0MHz H+V, Eff: 57.4%



Back View



930.0MHz H+V, Eff: 62.2%



Back View

