

DATASHEET

Wi-Fi HaLow Antenna ANTNM93003004001



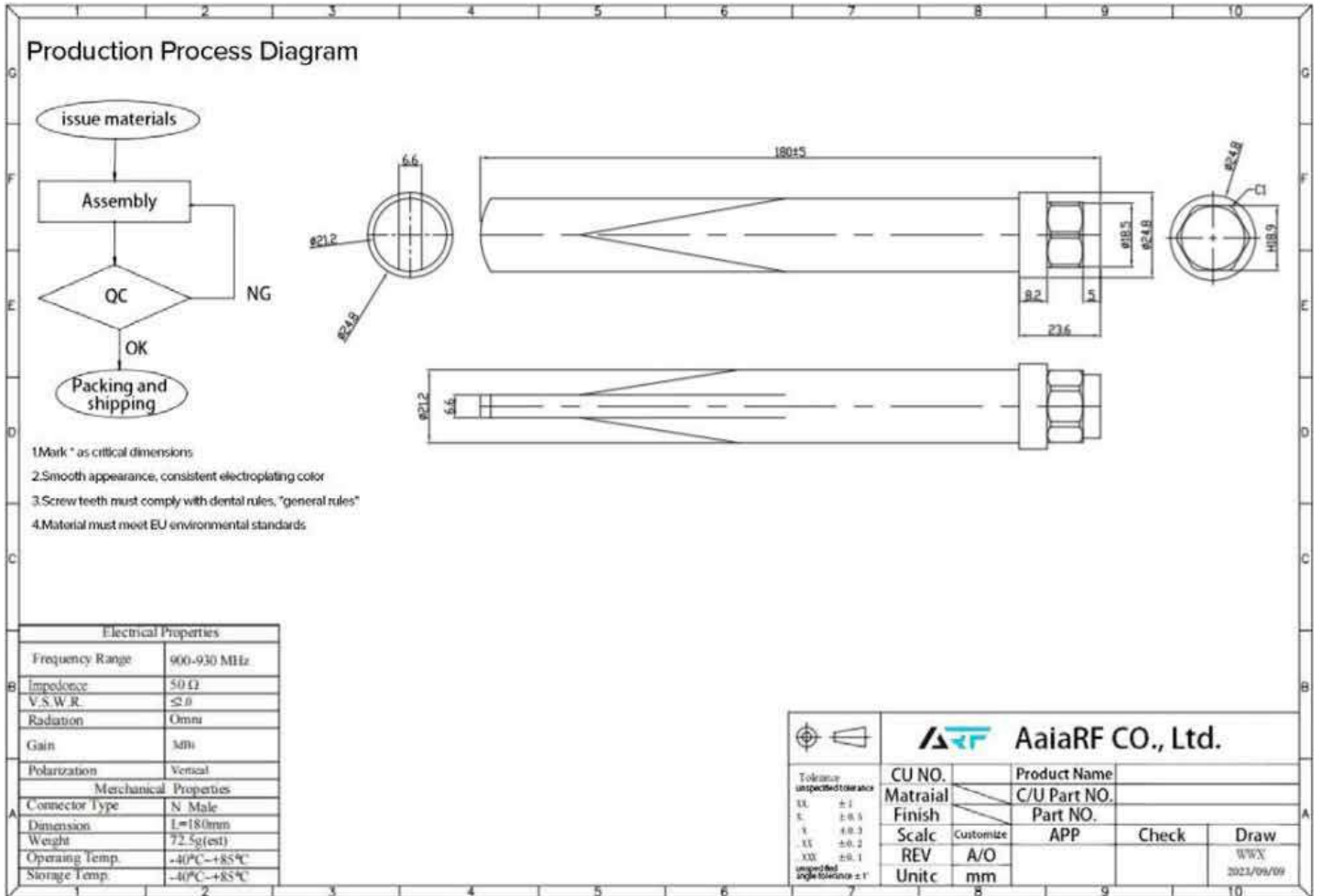
Electrical Properties

Frequency	900~930 MHz
Gain	3dBi
VSWR	2.0 MAX
Polarization	Vertical
Impedance	50Ω
Radiation	Omni

Mechanical & Environmental

Standard Connector	N PLUG
Weight	72.5g
Operating Temperature	-20°C~+65°C

Diagram





V.S.W.R Report

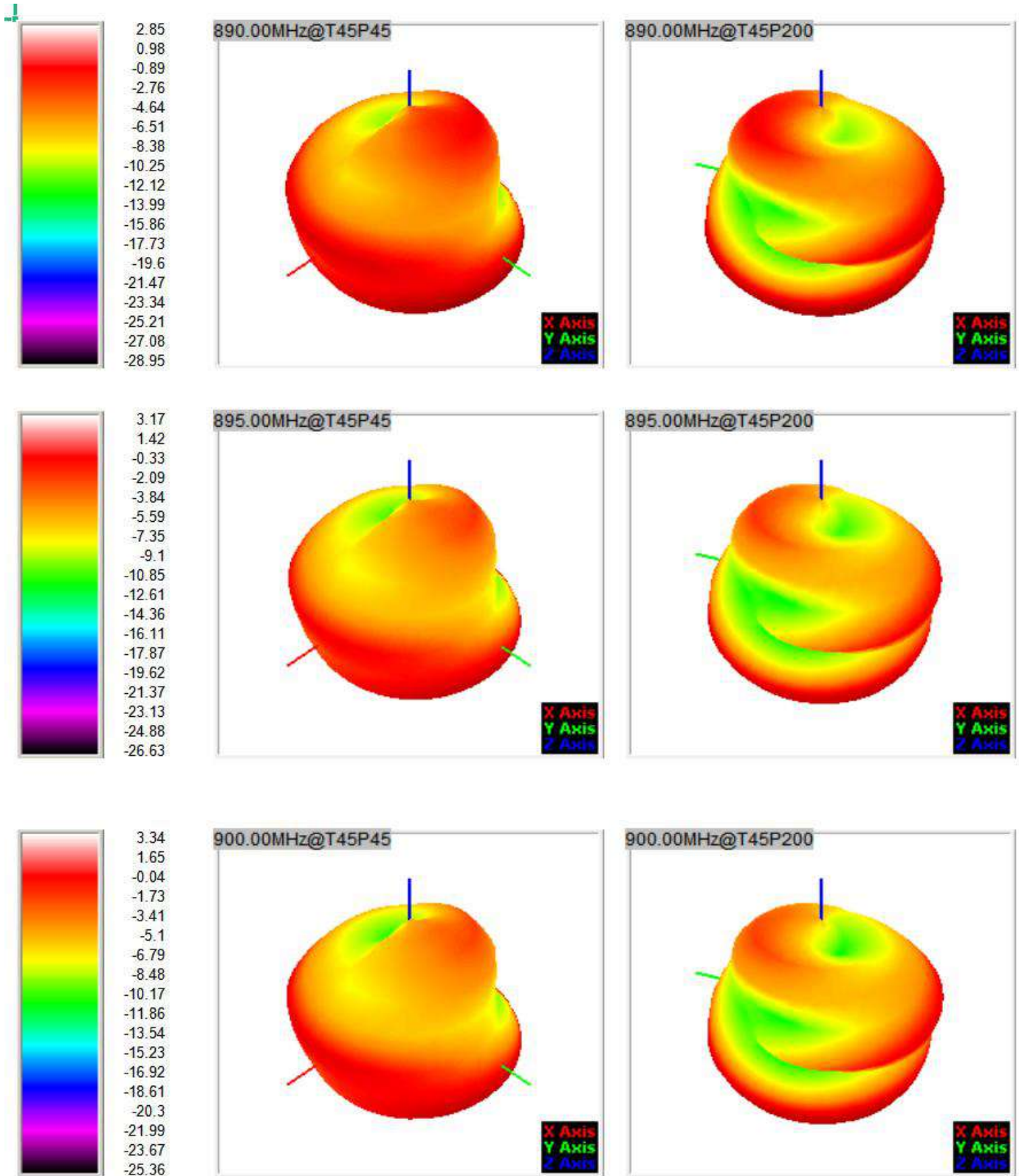


Gain Test Report

Frequency ID	1	2	3	4	5	6	7	8	9	10	11
Frequency (MHz)	890.0	895.0	900.0	905.0	910.0	915.0	920.0	925.0	930.0	935.0	940.0
Point Values											
Ant. Port Input Pwr. (dBm)	0.00	0.00	0.00	0.00	0.00	0.00	0.00	0.00	0.00	0.00	0.00
Tot. Rad. Pwr. (dBm)	-1.07	-0.91	-0.80	-0.80	-0.80	-0.77	-0.78	-0.88	-0.95	-0.98	-1.13
Peak EIRP (dBm)	2.85	3.17	3.34	3.38	3.42	3.51	3.56	3.42	3.39	3.35	3.20
Directivity (dBi)	3.92	4.08	4.14	4.18	4.23	4.27	4.34	4.31	4.33	4.33	4.33
Efficiency (dB)	-1.07	-0.91	-0.80	-0.80	-0.80	-0.77	-0.78	-0.88	-0.95	-0.98	-1.13
Efficiency (%)	78.10	81.20	83.10	83.20	83.10	83.80	83.60	81.60	80.40	79.70	77.10
Gain (dBi)	2.85	3.17	3.34	3.38	3.42	3.51	3.56	3.42	3.39	3.35	3.20
NHPRP \pm Pi/4 (dBm)	-1.84	-1.64	-1.50	-1.47	-1.46	-1.41	-1.40	-1.50	-1.57	-1.60	-1.73
NHPRP \pm Pi/6 (dBm)	-3.01	-2.81	-2.68	-2.67	-2.68	-2.66	-2.69	-2.82	-2.90	-2.95	-3.12
NHPRP \pm Pi/8 (dBm)	-4.17	-3.97	-3.86	-3.88	-3.92	-3.93	-3.99	-4.14	-4.23	-4.31	-4.50
Upper Hem. PRP (dBm)	-4.90	-4.73	-4.63	-4.61	-4.57	-4.51	-4.53	-4.65	-4.75	-4.87	-5.14
Lower Hem. PRP (dBm)	-3.40	-3.23	-3.12	-3.13	-3.17	-3.15	-3.16	-3.25	-3.29	-3.26	-3.33
Upper Hem. PRP (%)	32.38	33.64	34.42	34.58	34.92	35.42	35.25	34.29	33.47	32.55	30.61
Lower Hem. PRP (%)	45.74	47.54	48.72	48.61	48.17	48.38	48.32	47.33	46.93	47.19	46.46

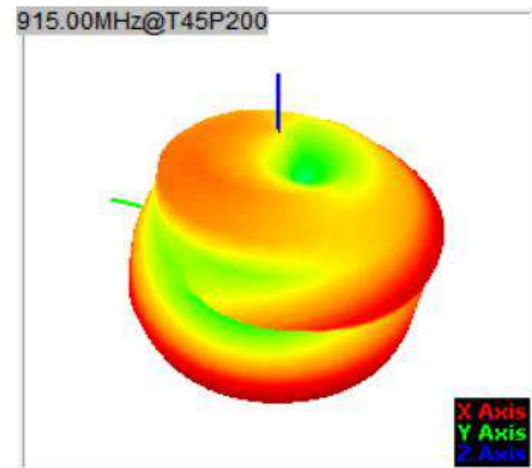
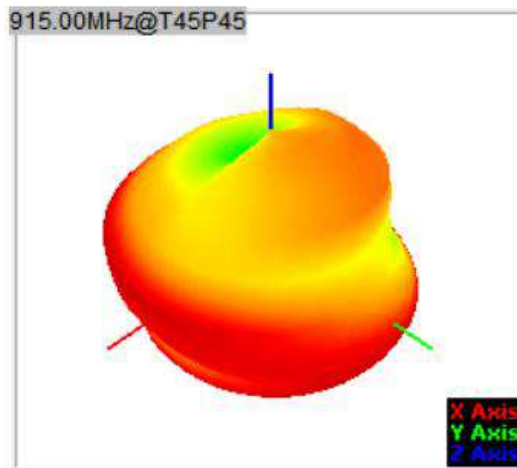
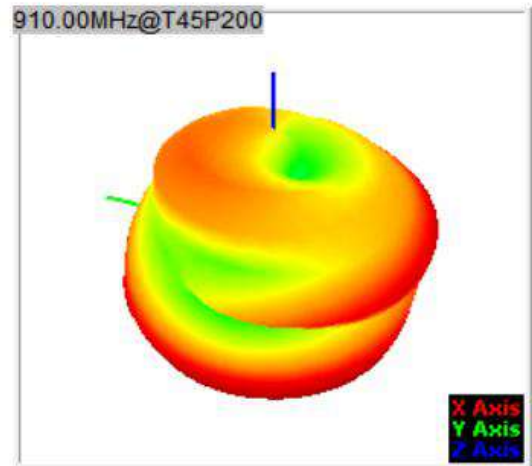
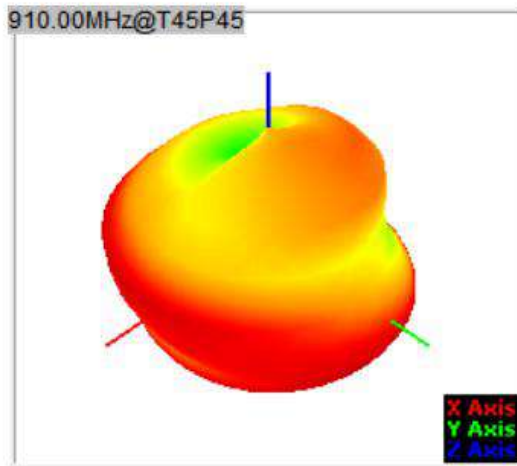
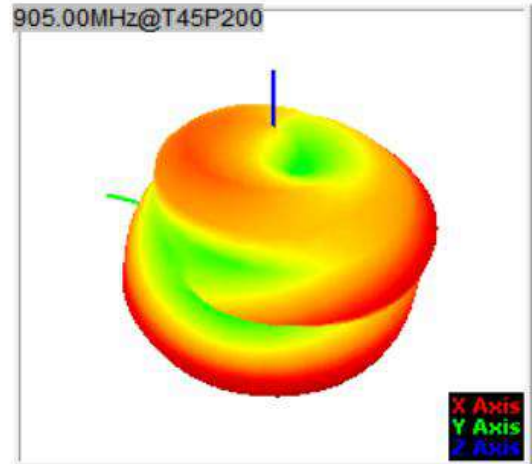
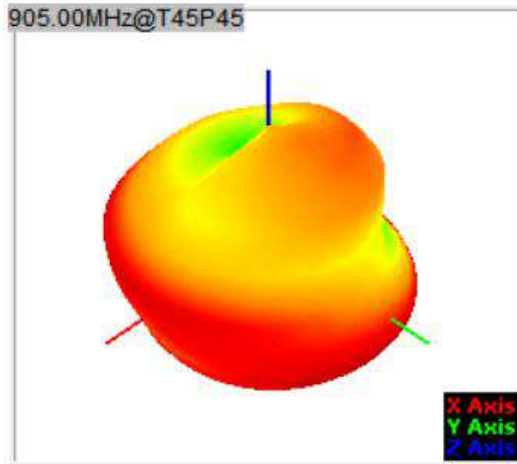


Gain Test Report





Gain Test Report





Gain Test Report

