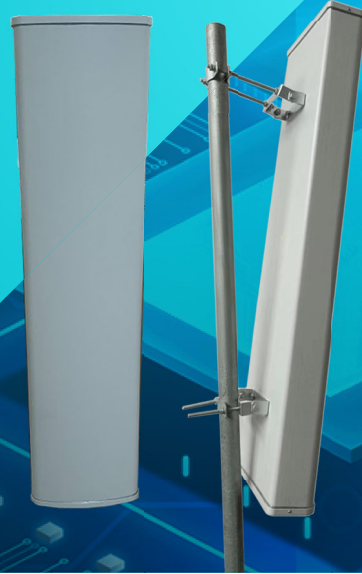


DATASHEET

Wi-Fi HaLow Antenna **ANTEM80613R01001**



DESCRIPTION

806-960MHz 13dBi Sector Antenna

Electrical Data

Frequency	806-960MHz
Gain	13dBi
VSWR	≤1.5
Polarization	Vertical
Horizontal Beamwidth	120±15°
Vertical Beamwidth	13°
F/B Ratio	>20 dB
Nominal Impedance	50Ω
Max Input Power	200W
Lightning Protection	DC Ground

Mechanical Data

Connector	N-Female
Dimensions	28*13*114cm
Weight	6.75kg
Radome Material	PVC
Operating temperature	40~+60°C

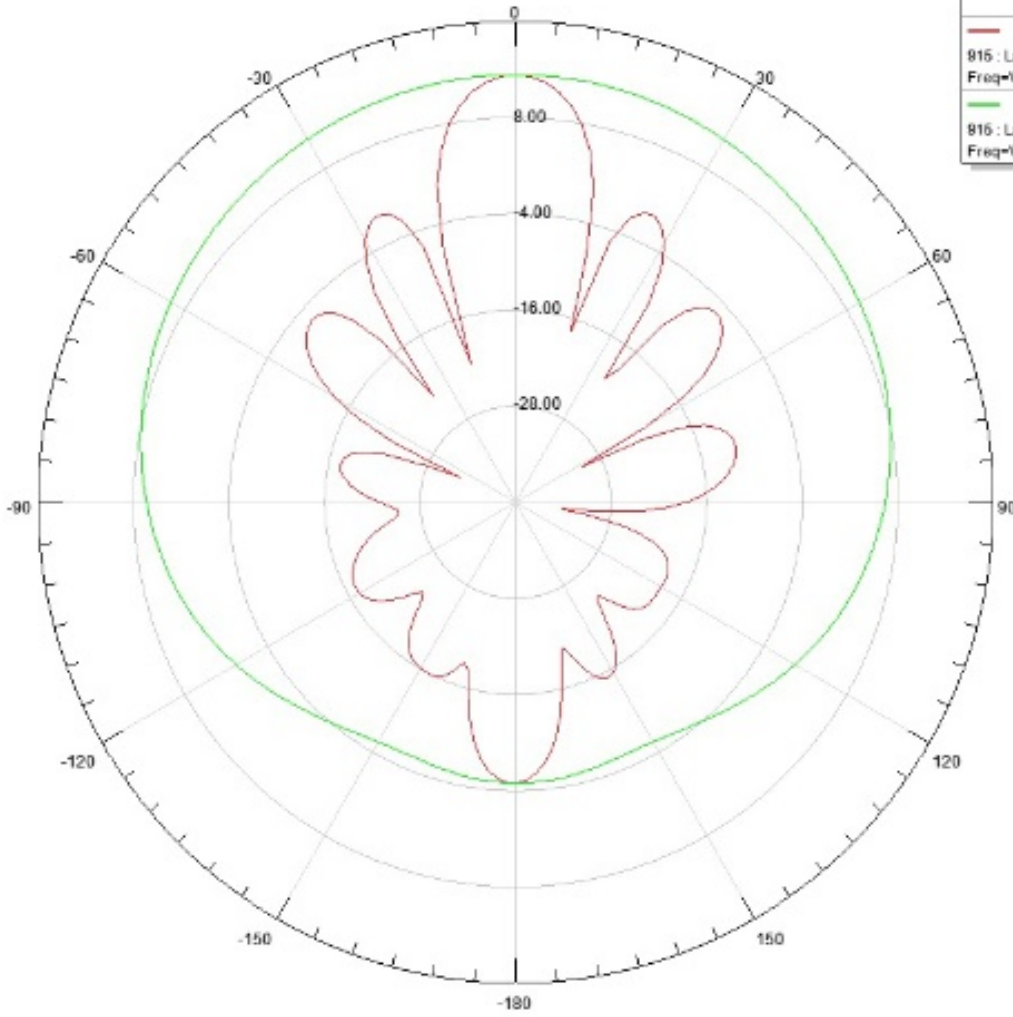
Shipment Data

Packing Qty	1pcs/Carton
Carton Size	118*30*20cm
Packing Weight	10.55kg/23.231lb



Radiation Patterns

Gain Plot 3



Curve Info	xdb10Beamwidth(3)	max
dB(GainTotal) 915 : LastAdaptive Freq=0.915GHz/ Phi=0deg'	15.1606	13.3475
dB(GainTotal) 915 : LastAdaptive Freq=0.915GHz/ Phi=90deg'	109.8646	13.3475

