

DATASHEET

900-930MHz Fiberglass Antenna



DESCRIPTION

High Performance 900-930MHz Omni directional Antenna for wireless communication.

KEY FEATURES

- Typical applications include 900-930MHz frequency band where high gain and wide coverage is desired.
- This simplifies installations since the same antenna can be used for a wide array of outdoor wireless applications where wide coverage is desired.

Specifications

Frequency	900~930 MHz
Impedance	50Ω
VSWR	≤2.0
Gain	4-5dBi
Polarization	Vertical
Connector Type	1 Port, N-Type Female
Temperature	-55° to +60° C (-67° to +140° F)
Color	White
Weight	400 g
Material	Fiberglass
Max power	50W

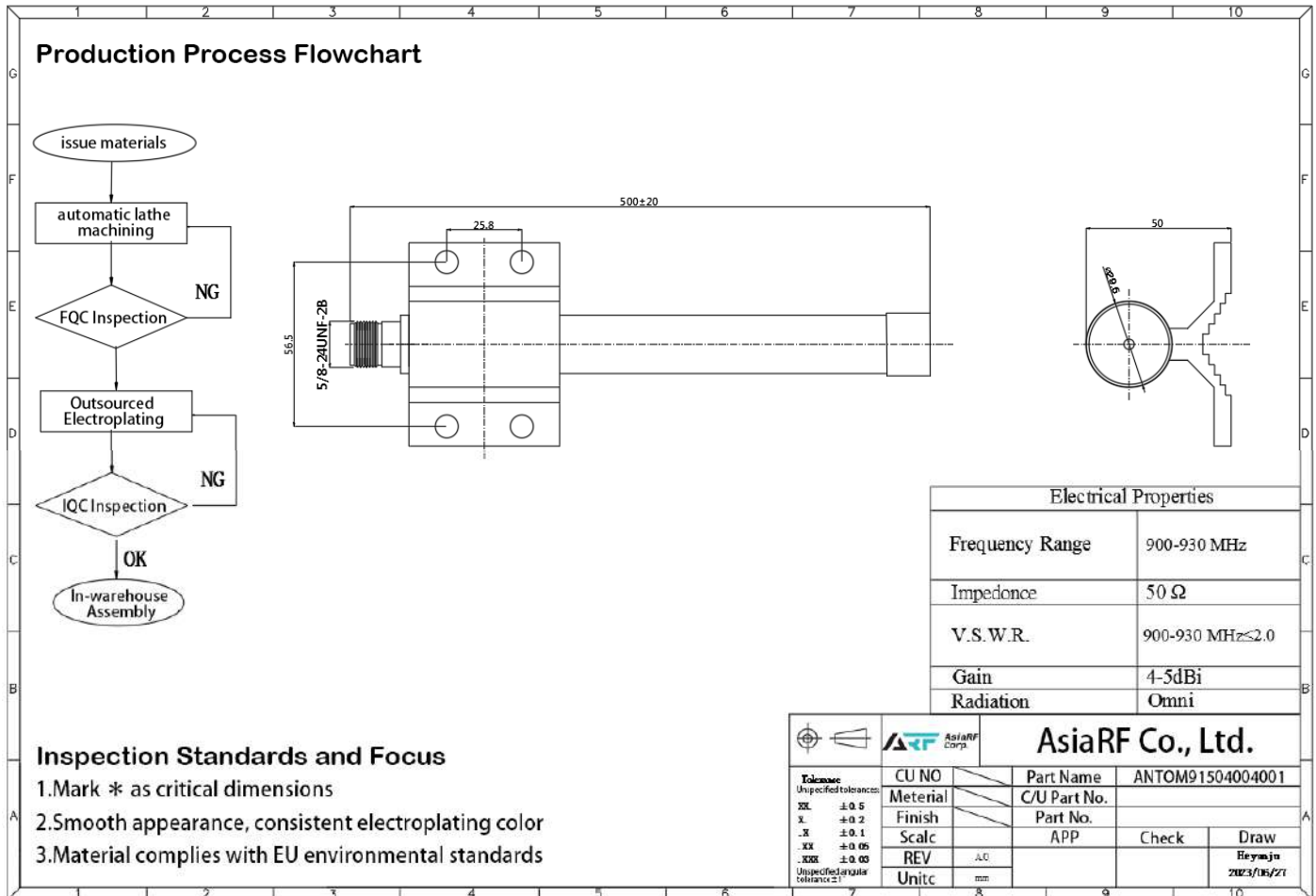
Version: 1.0

Release date: 2023-08-23

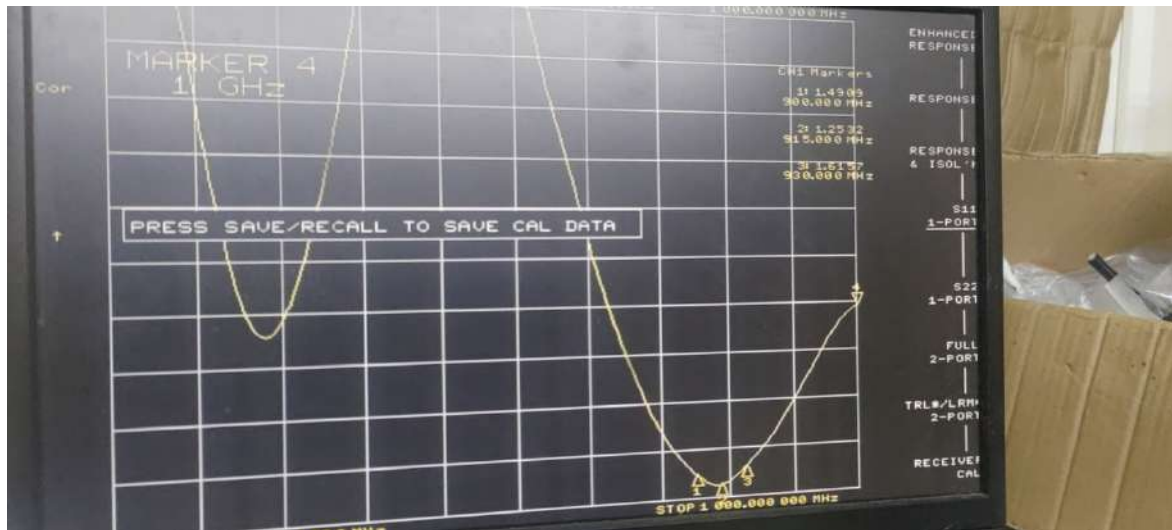
Page 1 of 4



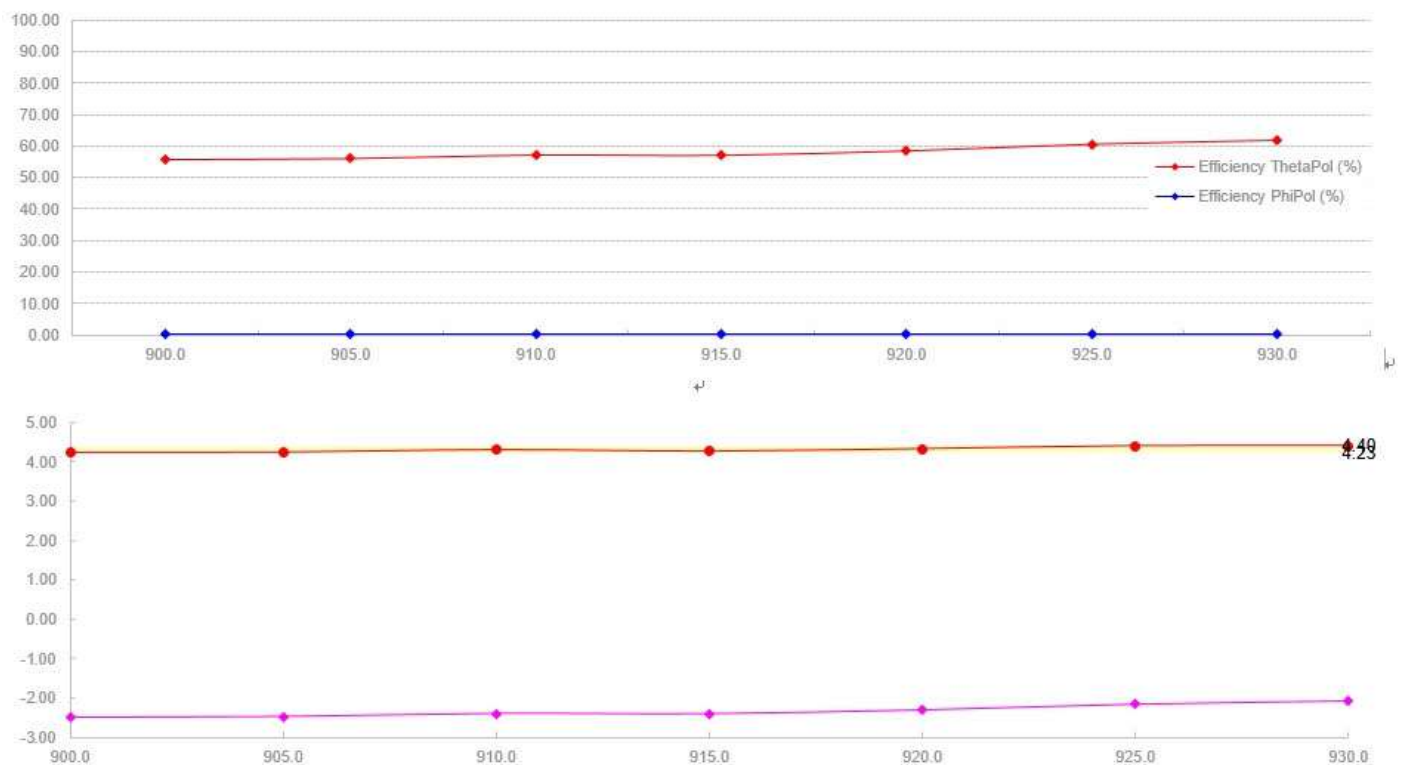
Organizational Chart



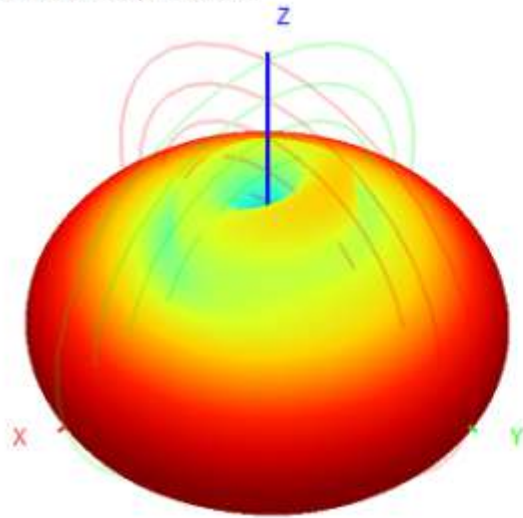
Gain Test Report



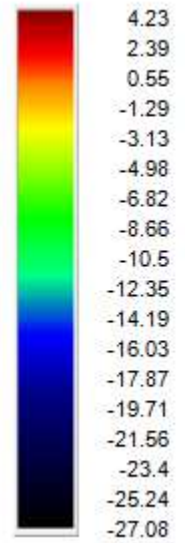
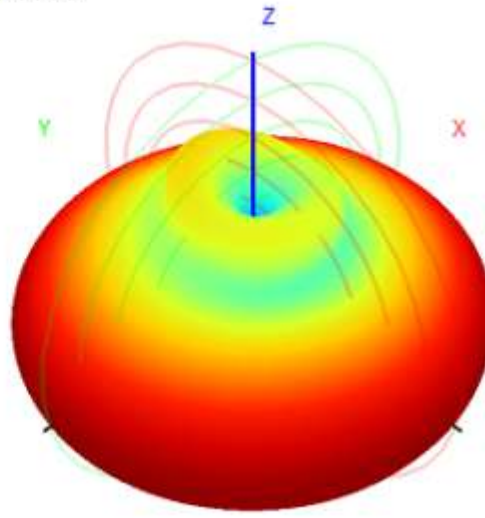
Frequency ID	1	2	3	4	5	6	7
Frequency (MHz)	900.0	905.0	910.0	915.0	920.0	925.0	930.0
Efficiency (dBi)	-2.50	-2.48	-2.40	-2.41	-2.30	-2.15	-2.06
Gain (dBi)	4.23	4.24	4.30	4.26	4.32	4.40	4.40
Efficiency (%)	56.19	56.46	57.54	57.44	58.83	60.92	62.16
Directivity (dB)	6.74	6.72	6.70	6.67	6.63	6.56	6.47
Peak Gain Position (Theta)	93.00	92.00	92.00	92.00	92.00	92.00	91.00
Peak Gain Position (Phi)	90.00	90.00	87.00	87.00	87.00	87.00	86.00
Efficiency ThetaPol (%)	55.70	55.98	57.06	56.98	58.36	60.43	61.66
Efficiency PhiPol (%)	0.49	0.48	0.48	0.46	0.46	0.49	0.51
Upper Hem. Efficiency (%)	25.48	26.07	27.09	27.62	28.96	30.77	32.28
Lower Hem. Efficiency (%)	30.71	30.39	30.44	29.82	29.86	30.15	29.89



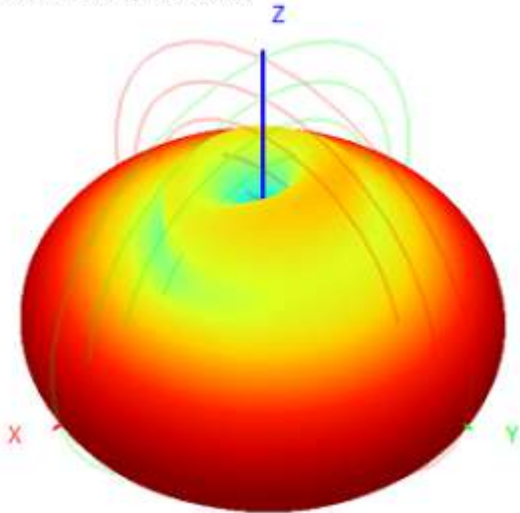
900.0MHz H+V, Eff: 56.2%



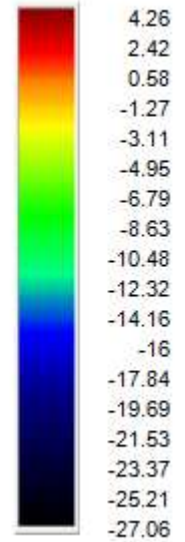
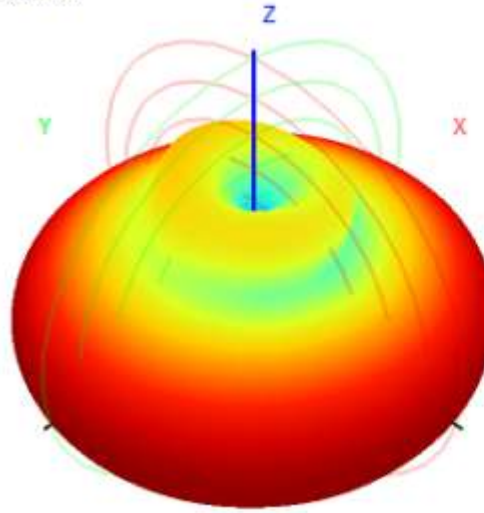
Back View



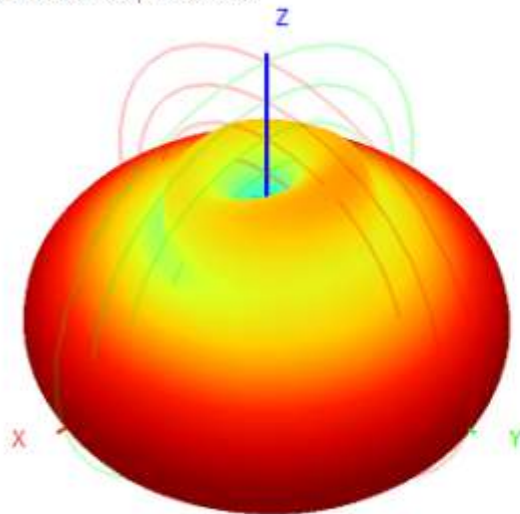
915.0MHz H+V, Eff: 57.4%



Back View



930.0MHz H+V, Eff: 62.2%



Back View

